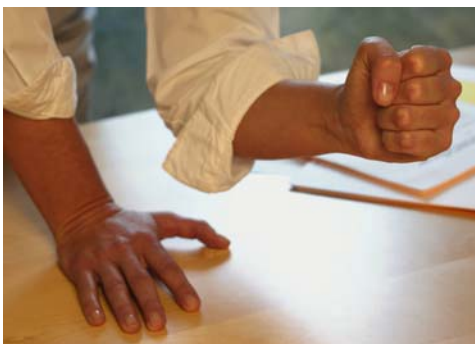


Domestic Violence and Abuse

Teresa Martin



What is Domestic Abuse?



- “Any incident of threatening behaviour, violence or abuse (psychological, physical, sexual, financial or emotional) between adults who are or have been intimate partners or family members, regardless of gender or sexuality”

» Home Office



Gender and Domestic Violence



- Research has repeatedly concluded that “gender is a significant risk factor”
- Women more likely to experience DVA and also to experience severe and/or repeated, often life-threatening, incidents of violence and abuse.
- Female victims more likely to be abused post-separation than men.
- Research has shown that when women use violence/kill it is often to defend themselves or their children from a violent partner



Domestic abuse is a serious problem



Nationally in 2010/2011:

- Every year 1 million women experience at least one incident of DV – nearly 20,000 women a week
- Highest rate of repeat victimisation of any serious crime - RV accounts for 73% of all incidents of DV
- Women were the victims in 77% of incidents

Source: British crime survey 20010/11

- In 2009/10, 54% of female victims of homicide aged 16 or over had been killed by (ex) partner – 94 offences
- 5% of male victims aged over 16 killed by (ex) partner – 21 offences



How much Domestic Abuse is there in Bucks?



2010 - 11

- **6,044** incidents reported to police
- **2,678** repeats
- Children involved/in house in **1,517** of incidents
- **5** recorded DV murders over last 5 years (+ 5 attempted)
- **2** murders so far in 2011/2012



How many people are accessing services in Bucks?



- **125** women and **154** children accommodated in refuges in Bucks
- **212** women and **244** children being refused refuge due to lack of space
- **331** women worked with on outreach basis
- **193** IDVA clients
- New IDVA clients had a total of **411** children
- **178** clients seen by MARAC
- First 4 months of 2011/2011 – **89** clients
- If referrals maintained at current rate an estimated **267** cases will be seen at MARAC in 2011/2012 (50% increase)



Under-Reporting



- Using Home Office ready reckoner tool, estimated levels of VAWG based on female population of 253,900 between 16-59 and BCS prevalence rate for our region:
- **16,504** women and girls have been victim of DV in the past year (more than 2½ times police reports)
- Estimated 10% of victims high risk = **1,650**

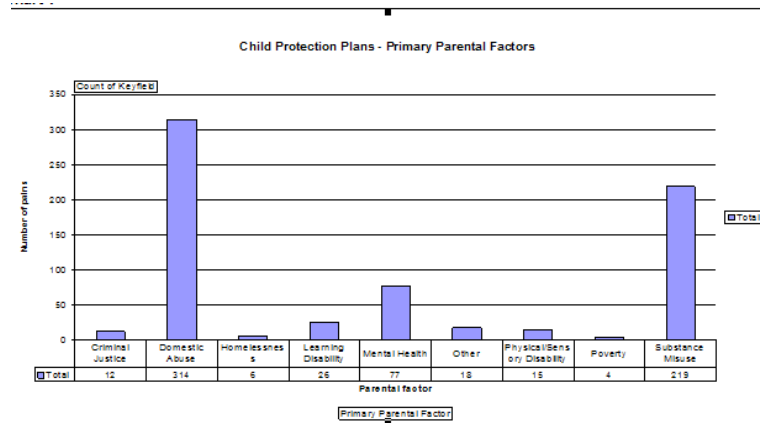


DV and Children...



- The NSPCC identified that DA was identified in **two thirds** of Child Protection Cases
- Over **75%** of cases presented at **Bucks** Children Social Care, had DV as a presenting problem





Partnership Approach

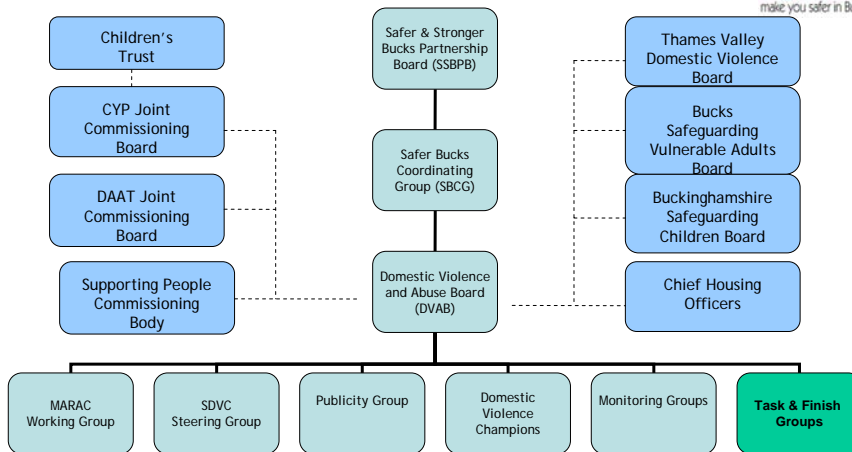
- Crime and Disorder Act 1998 places obligation on CSP and public bodies to work together to reduce violent crime, including DV
- Provides legal foundation for effective information sharing in order to protect and prosecute within DV cases
- Agencies work toward a Coordinated Community Response – all working together to reduce the risk and increase the safety of victims



- DV one of the top 3 priorities for the SSBPB
- No Excuse for Domestic Abuse strategy vision –
To promote a zero tolerance and co-ordinated response to people at risk of DVA in Buckinghamshire, to seek to ensure that those who are affected are identified, supported, protected and empowered



Governance



- SSBPB – Multi-agency board with responsibility for strategic leadership of CS activity in Bucks and identify partnership priorities
- Evaluate performance and hold each other to account
- Annual Joint Strategic Assessment – Used to identify priorities and commit resources



Roles of Statutory Agencies

- Police – Enforcement
- CPS - Prosecution
- Health – GPs, A&E, Health Visitors, Midwives
- Districts - Housing
- BCC – Safeguarding Children and Adults, Education, Community Safety
- Probation – Working with offenders and victims of violent/sexual offences



What support do we have in Buckinghamshire?



- Women's Aid – refuge and outreach
- Victim Support
- RELATE
- National Help lines Independent Domestic Violence Advocate
- Freedom Programme
- Multi Agency Risk Assessment Conference
- Fresh Start programme
- YP Freedom Programme
- Children Support in Women's Aid
- Child Therapy Groups
- Expect Respect Programme
- Media & Awareness Raising
- Training for professionals
- DV Directory of Services



Funding



C&YP

2011/12 - £114,450

2012/12 - TBC

Supporting People

2011/12 - £167,000 to Women's Aid for Refuge (to be reduced by 15%)

Districts

Contribute to Women's Aid services



IDVA Funding



S&S Partnership Funding for IDVA

2011/12 - £60,000

2012/13 - £75,000 (tbc)

2013/14 – Unknown as will be managed by PCC

MoJ IDVA Funding

2011/12 - £20,000

2012/13 - £20,000 (tbc)

2013/14 – None as 3 year funding expired

DV Partnership Budget

2011/12 – Balance of partnership money which has contributed to IDVA and Fresh Start programme

2012/13 – Historical funding sources have now expired



Future...new commissioning approach?



- Proposal to pool resources from C&YP, CS, A&FWB
- Enable efficiency savings and a co-ordinated approach to monitoring and evaluation
- Reduce burden on providers
- Effectively lead to commissioning in partnership a smaller number of projects with higher value contracts



How would it work?



- DVA Strategy 2012-2015 is currently being developed and would feed into the commissioning approach
- Single commissioning strategy led jointly by commissioners in Adult, YP and CS teams
- D&CVSG would inform and drive future DVA commissioning
- D&CVSG responsible for agreeing and monitoring spend



Any Questions?



Contacts Details



- Teresa Martin
- tmartin@buckscc.gov.uk
- 01296 383701

